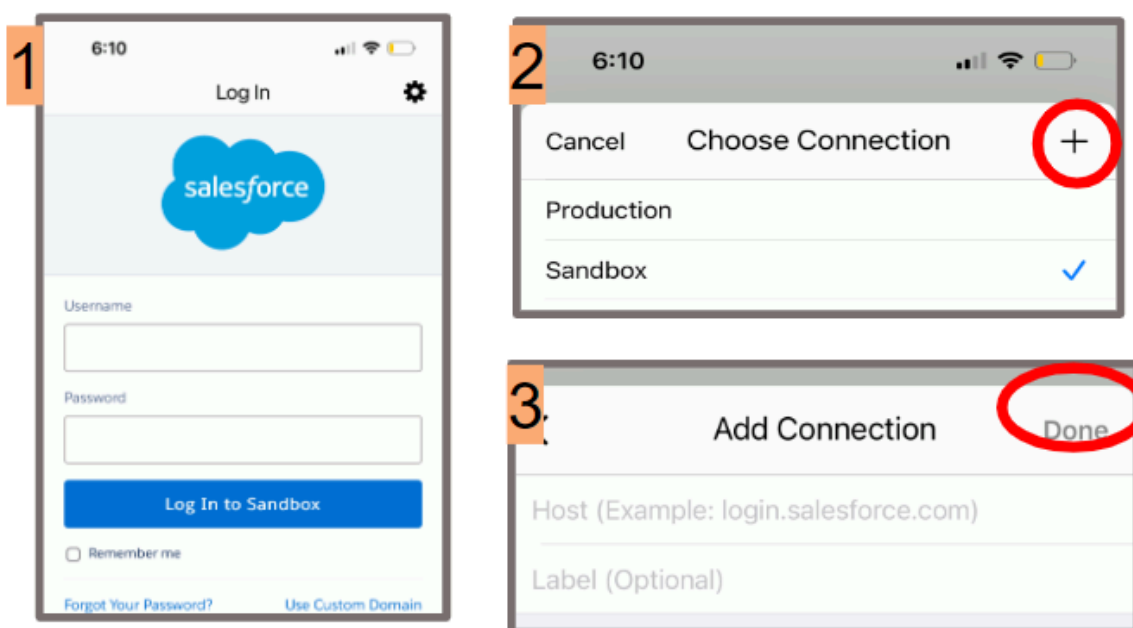


Adding the SMM Connection to the Field Service App

Getting Started

- Download the (Salesforce) Field Service app.
 - *Please note: you will NOT be able to log in until completing the next step.*
- Add the Share My Meals connection using the steps shown below and typing the Connection URL into the 'Host' (iPhone) or 'Type URL Here' (Android) field:

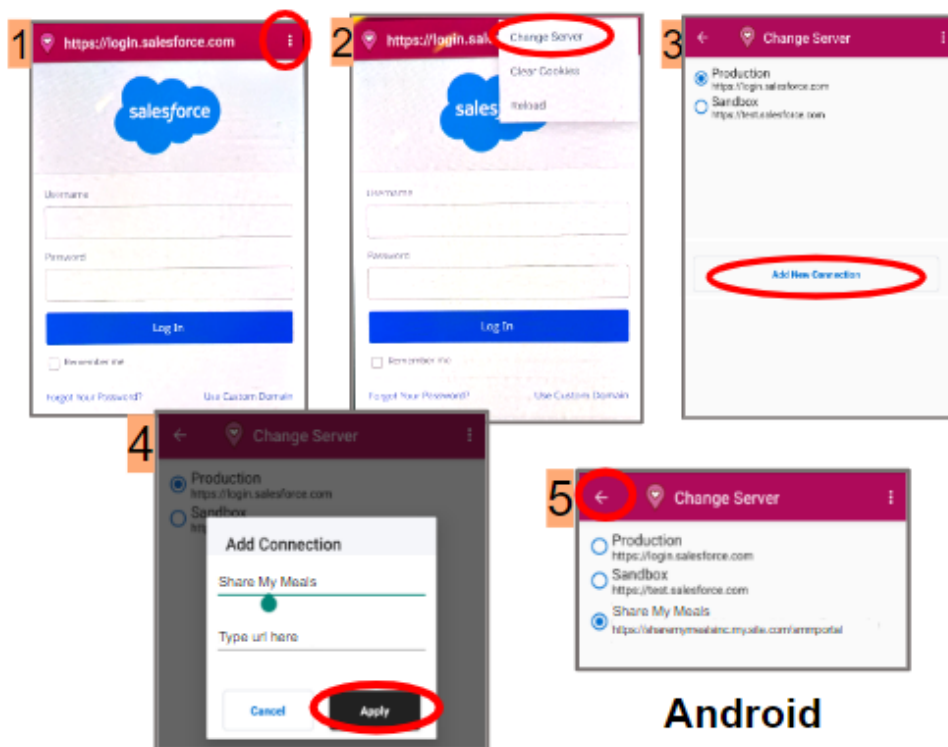
Connection URL: <https://sharemy mealsinc.my.site.com/smmportal>



Apple (iOS)

On iPhone:

1. On the login screen, tap the gear symbol in the upper right corner of the screen.
2. On the 'Choose Connection' screen, tap the plus sign in the upper right corner of the screen
3. In the 'Add Connection' window, type the URL in the 'Host' field:
<https://sharemy mealsinc.my.site.com/smmportal>
4. In the 'Label' field, write 'SMM'
5. The connection is successfully added when the Share My Meals logo appears on the login page.
6. Repeat adding the connection steps if you do not see the Share My Meals logo on the login page.



Android

On Android:

1. On the login screen, tap the three dots in the upper right corner of the screen.
2. Select 'Change Server', then select 'Add New Connection' at the bottom of the screen.
3. On the 'Add Connection' page, type the URL in the field marked 'Type URL Here':
https://sharemy mealsinc.my.site.com/smmportal
4. In the label field, type 'SMM'.
5. Tap the arrow in the upper left corner of the screen to return to the login page.
6. The connection is successfully added when the Share My Meals logo appears on the login page.
7. Repeat adding the connection steps if you do not see the Share My Meals logo on the login page.

- If the connection was correctly added, you will see the login screen pictured.
 - *Please note: BEFORE logging into the app, an account in the Share My Meals portal must be created and the volunteer waiver and manual must be signed.*
- Allow the app to access your camera (for tray scanning) and location 'While using the app'.
- Use your email address and password for the Share My Meals portal to log into the app.

